

Twin Cities Equity in Practice Learning Community (EiPLC)

MSP EDUCATION EQUITY DATA HUB

WHO WE ARE

The Minneapolis & Saint Paul (MSP) Education Equity Data Hub is a cross-sector effort to create more accessible, transparent, and equitable practices and policies around education data, spanning early childhood through postsecondary opportunities. We are part of the national EiPLC (2023–present) and led locally by Generation Next, Northside Achievement Zone (NAZ), Saint Paul Promise (SPP), and Wilder Research. We greatly appreciate our state agency partners from the Minnesota Department of Education (MDE), Office of Higher Education (OHE), and Department of Children, Youth and Families (DCYF).

KEY MILESTONES

- **2021** – Place-based data project with MN Compass
- **2022** – Wilder Research interviews with community-based leaders
- **2023** – Joined Actionable Intelligence for Social Policy (AISP) EiPLC
- **2024** – Generation Next Leadership Council names the Data Hub as the top systems transformation initiative to lead.
- **2025** – Meaning-making and exploratory data sessions with NAZ & SPP



Data about
children, families,
and communities
in Minnesota
belongs to the
people, not to
institutional bodies.

OUR SHARED ASSUMPTIONS

To do this work, we are embracing the knowledge that:

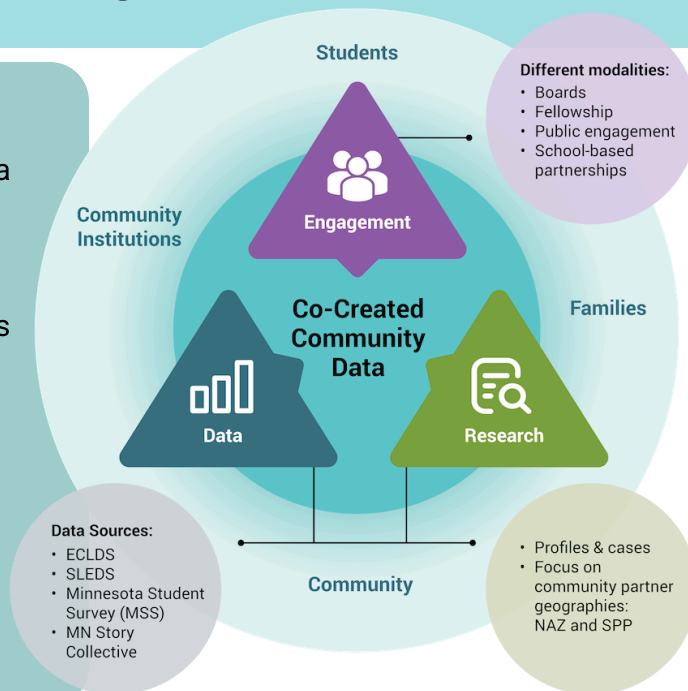
- Data about children, families, and communities in Minnesota belongs to the people, not to institutional bodies
- Institutional bodies have power to hold data and control access and use of data
- Data can be and has been used to harm children, families, and communities in Minnesota
- Data helps us understand educational inequities, but data alone can not fix inequities
- We are not currently maximizing the potential of data to support educational progress, outcomes, and success for students in Minnesota
- Policies and practices around data use do not center or engage Black, Brown, Indigenous, and other youth and adults of color, who are most affected by inequitable educational and data processes

Twin Cities Equity in Practice Learning Community (EiPLC)

MSP EDUCATION EQUITY DATA HUB

OUR COMMITMENTS

- ☆ Learn and study national best practices in integrated data systems, community-engaged design, and inter-agency partnerships
- ☆ Be clear, transparent, and honest about our shared values and the goals of our collaboration, at all times
- ☆ Engage our communities in ways that are not extractive, by compensating people for their time and valuing their collaboration through the practices and policies that we create
- ☆ Partner with Minnesotans of all ages, from youth to elders, to design processes and tools that support us all



LEARNING FROM OUR COMMUNITY

We work with education stakeholders to explore challenges, opportunities, and uses for the Data Hub by engaging the Conditions for Systems Change Framework (Kania et al., Waters of Systems Change, 2018). The following themes emerged from the cross-sector Generation Next Leadership Council.

Mental Models

- Data is fragmented, outdated, disconnected from student experience
- Leaders want **real-time attendance, survey data, and storytelling overlays**

Power Dynamics

- Data use must be **transparent, culturally relevant, and community-driven**
- Families, youth, and educators must help interpret findings

Relationships & Connections

- Students thrive when linked to diverse networks across **arts, advocacy, education, and business.**
- Collaboration builds trust and ensures data leads to meaningful change.

NEXT STEPS

- Data sessions with NAZ, SPP, and other community partners to shape the Data Hub--how we use and leverage it
- Presentations with AISP, StriveTogether, and other national partners to explore the power of data equity to leverage systems change
- Visioning with youth and practitioners for regular data engagement
- Collaboration with other data hubs to learn about community advisory and governance structures

CONTACT US!



Joe Munnich
info@gennextmsp.org



northsideachievement.org
saintpaulpromiseneighborhood.com
gennextmsp.org