

StriveTogether[®]

2021 Cradle to Career Network Convening

Oct. 4-8, 2021 | Virtual



roots to rise

Grounded in community, together we thrive



ROOTS
to **RISE**

2021 Cradle
to Career
Network
Convening
#ConveneC2C

Uncovering the Narrative with Longitudinal Data

StriveTogether®
Every child. Cradle to career.

Generation Next (Minneapolis & Saint Paul, MN)

Jeremiah Ellis
Molly Barrett
Joe Munnich



Uncovering the Narrative with Longitudinal Data

—
Generation Next (Minneapolis & Saint Paul, MN)

Jeremiah Ellis
Molly Barrett
Joe Munnich



roots to rise



**2021 Cradle
to Career
Network
Convening**

#ConveneC2C



Jeremiah Ellis

Director of Outreach &
Partnerships
Generation Next



Molly Barrett

Marketing &
Communications Manager
Generation Next



Joe Munnich

Managing Director
Generation Next



2021 Cradle
to Career
Network
Convening

#ConveneC2C

OUR MISSION:
is to harness the community's knowledge, expertise,
and action to ensure that every child can thrive.

OUR VISION:
Every child has the academic, social and emotional
skills to thrive in a globally fluent world

gennextmsp.org



A Partnership for Student Success
from Early Childhood to Early Career



@gennextmsp



@gennextmsp



Minneapolis & Saint Paul
MINNESOTA



Generation Next

- Our work impacts over **75,000** students
- Direct engagement of Superintendents from both Minneapolis Public Schools and Saint Paul Public Schools

Three priority areas:



Early Childhood Quality & Access



Teacher Diversity & Teaching Diverse Learners



Postsecondary Preparation & Persistence

Three Leadership Council Work Groups:



Practice

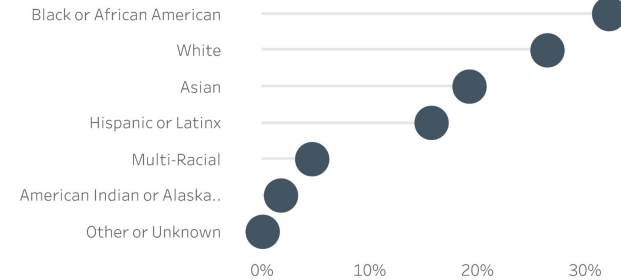


Policy



Funding

Student Race for Generation Next



**2021 Cradle
to Career
Network
Convening**

#Convenc2C

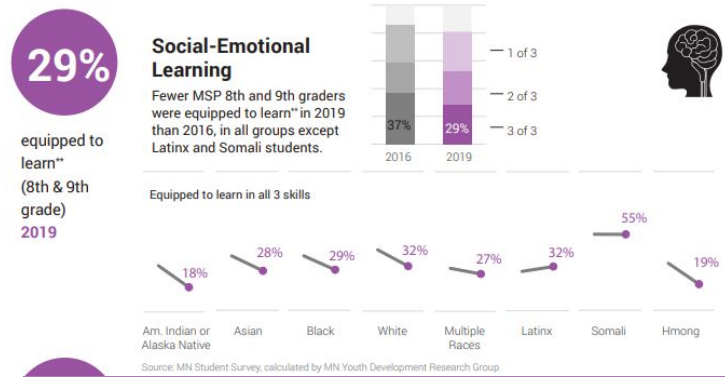
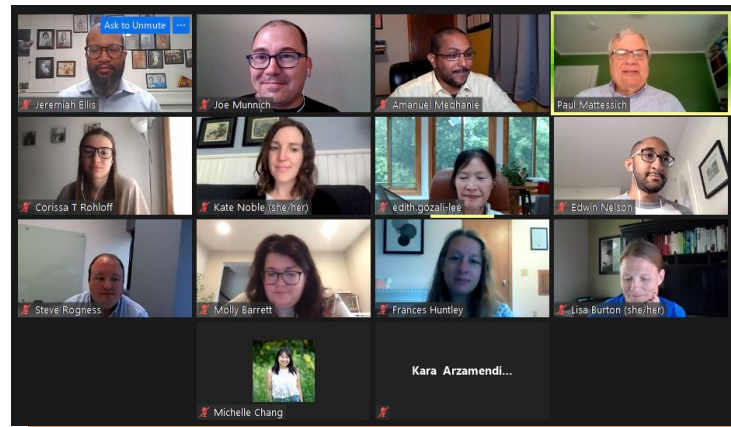


Evidence-Based Decision-Making

- Data Committee since before founding
- Focus on disaggregation by race, city, district/charter, grade
- Primarily individual student outcomes at “benchmark” points-in-time (K, 3rd, 8th, HS, PS)

2021 Cradle to Career Network Convening

#ConveneC2C





Data Committee

A GUIDE TO:
data sharing

PARTNERSHIP HIGHLIGHT

Generation Next
(Minneapolis, Minn.)

Interested in forming a data committee?

Network member Generation Next was founded nearly eight years ago with a data committee to support evidence-based decision making and continuous improvement. The committee provides guidance on data use and interpretation to its own members and the broader coalition, whose mission is to increase achievement and close gaps among students experiencing poverty and students of color in the Twin Cities. Members of the committee represent many organizations and perspectives — such as the school district, state education departments, local postsecondary institutions, research centers and community-based organizations.

In 2012, the committee took the lead in designing goals and measures for the new Generation Next partnership. It led a process to examine the work of StriveTogether organizations throughout the U.S. and to receive input from the Twin Cities community on appropriate goals and measures. After securing consensus on goals and establishing reliable measures, the committee's role evolved to enhance the way Generation Next could use data to strengthen its activities. Generation Next staff consulted with the committee when developing plans and monitoring progress. The committee offered its voice in advocating for valid, reliable measurement of student progress by school districts and the state.

Though there is no data sharing commitment required to serve on the data committee, many of the initial members were representatives of agencies that provided aggregate data for the partnership's data dashboards, analyses and evaluations. More recently, the relationships formed in the committee led to additional access to individual-level student data from the state's longitudinal education data system to support a postsecondary transitions project by the partnership. In sum, data committees can serve many important functions for the partnership, including the building of relationships that can open the door to numerous data sharing opportunities.

You can learn more about the committee by reading its mission statement and viewing its membership. [Click here to access](#) >

You can also learn more about Generation Next's data by visiting the Data Center. [Click here to access](#) >

2021 Cradle
to Career
Network
Convening
#Convenc2C





Longitudinal Data Opportunity

Minnesota Statewide Longitudinal Education Data System (SLEDS) linkable data repository to identify, organize, and analyze education and workforce data facilitating creation of summary reports to be created for students, parents and stakeholders

2021 Cradle
to Career
Network
Convening

#ConveneC2C





The Challenge

- “Objective” data detached from racial and cultural context
- Post-mortem nature of longitudinal data

2021 Cradle
to Career
Network
Convening

#ConveneC2C





Impact

- Add context and relevance to our education systems through lived-experience

2021 Cradle
to Career
Network
Convening

#ConveneC2C



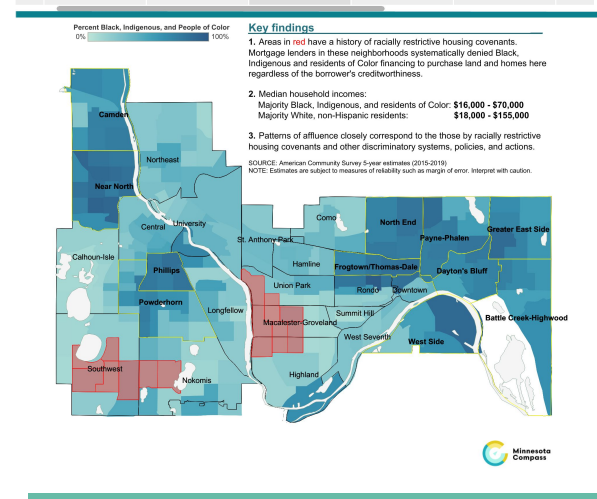


Community Result

- Solutions grounded in the reality of the community and those we are trying to support
- Systems centered on equity
- Authentic and lasting change in practice, policy, and funding

2021 Cradle
to Career
Network
Convening

#ConveneC2C





Questions

- How have you presented context in concert with data?
- How have you considered who is missing from the context and valued their lived-experience?
- What barriers and successes have you encountered?

2021 Cradle
to Career
Network
Convening

#ConveneC2C



Breakout Groups

2021 Cradle
to Career
Network
Convening

#ConveneC2C



Learnings/Takeaways

2021 Cradle
to Career
Network
Convening

#ConveneC2C



THANK YOU TO OUR INVESTORS:

Annie E. Casey Foundation

Communities In Schools

AT&T

Ford Foundation

Ballmer Group

Island Foundation

Benson Family Foundation

Pritzker Children's Initiative

Bill & Melinda Gates
Foundation

Tableau Foundation

Chan Zuckerberg Initiative
DAF, Silicon Valley Community
Foundation

The Kresge Foundation

Walmart

2021 Cradle
to Career
Network
Convening

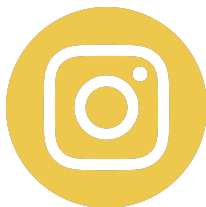
#ConveneC2C



FOLLOW US! Click on icon to be redirected to respective platform



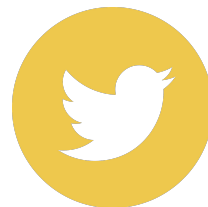
Facebook



Instagram



LinkedIn

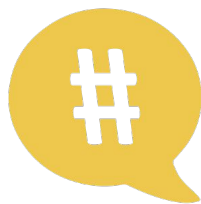


Twitter



YouTube

JOIN THE CONVERSATION with the following hashtag



#ConveneC2C

2021 Cradle
to Career
Network
Convening

#ConveneC2C