

CONTRIBUTING FACTORS

To improve cradle-to-career results, we need to understand the drivers and determinants of community-level outcomes. Contributing factors inform the way we align partners across the community to take meaningful action and measure our Coalition's impact on our six goal areas.

Kindergarten
Readiness



- Quality Early Childhood Program Access
- Early Screenings
- Screening Follow-up

Early Grade
Literacy



Early Reading Development

Middle Grade
Math



Early Math Development

Social-Emotional
Learning



- Previous (5th Grade) Equipped for Learning
- Commitment to Learning
 - Positive Identity
 - Social Competence

High School
Graduation



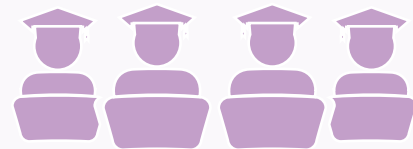
- On-Track
- Attendance
 - Credit Attainment/Credit Loss

Post-
Secondary
Attainment



- Financial aid form completion
- Application completion
- Enrollment (1st fall)
- Developmental course-taking
- Persistence (2nd fall)
- Employment rates
- Employment in high demand areas

EDUCATION CONTRIBUTING FACTORS



Teacher/School Quality and Support

Teacher Diversity

Staff-Student Relationships

Family/Community Support

Out-of-School Time (OST) Participation and Positive Experience

Attendance (excused / unexcused)

- Removal From Learning
- Office Disciplinary Referrals (ODR)
 - In-School Suspensions (ISS)
 - Dismissals
 - Out-of-School Suspensions

Student Empowerment

OTHER CONTRIBUTING FACTORS



Housing



Transportation



Health

CONTEXTUAL FACTORS

Poverty Rates

Concentration of
Poverty

Employment

Public Safety /
Crime Rates

PRIORITIES

In 2019, Generation Next will focus on four key priority areas to influence contributing factors that are critical to success in our six goal areas.



Early Childhood
Quality and Access



Teacher Diversity
and Teaching Diverse
Learners



Post-Secondary
Preparation and
Persistence



Transitions